

Port Jewish

Service Impact Report

January 20th-February 2nd



Volunteer Impact Metrics



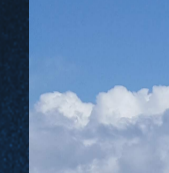
2 community partners benefited from volunteers support



Approximately 11 volunteers showed their support



Volunteered an approximate total of 72 volunteer hours



An estimated \$1818.25 philanthropic impact



\$220 donated directly to community partners



This means a roughly \$2038.25 TOTAL philanthropic impact!



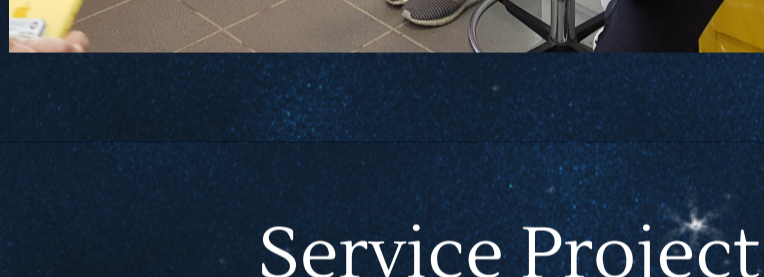
Service Project: Environmental Sustainability



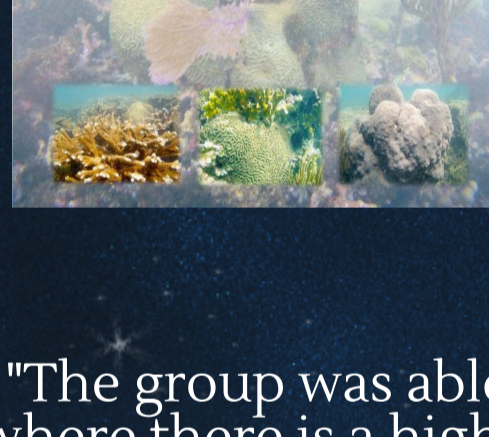
Manatee Conservation Center

"The group was a huge help to the Manatee Conservation Center team by getting the food ready for the staff's tightly scheduled shifts! Thank you!"

-Paola, Volunteer Coordinator



Service Project: Environmental Sustainability



CRES Puerto Rico

"The group was able to do important work in an area where there is a high degree of erosion especially after the impact of Hurricane María."

-Yvette, Director



Thank you for helping us in our mission of building investment in, commitment to, and capacity of our community partners!

