

Rutgers

Service Impact Report

Saturday, January 5th- Sunday, January 11th



Table of Contents

-Page 2: Volunteer Impact Metrics

-Page 3-5: Service Project Details

-Page 6: Thank You!

Volunteer Impact Metrics



3 community partners benefited from volunteers support



Approximately 12 volunteers showed their support



Volunteered an approximate total of 21 volunteer hours



An estimated \$6,408.36 philanthropic impact



\$480.00 donated directly to community partners

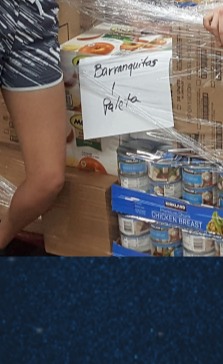


This means a roughly \$6,888.36 TOTAL philanthropic impact!



2

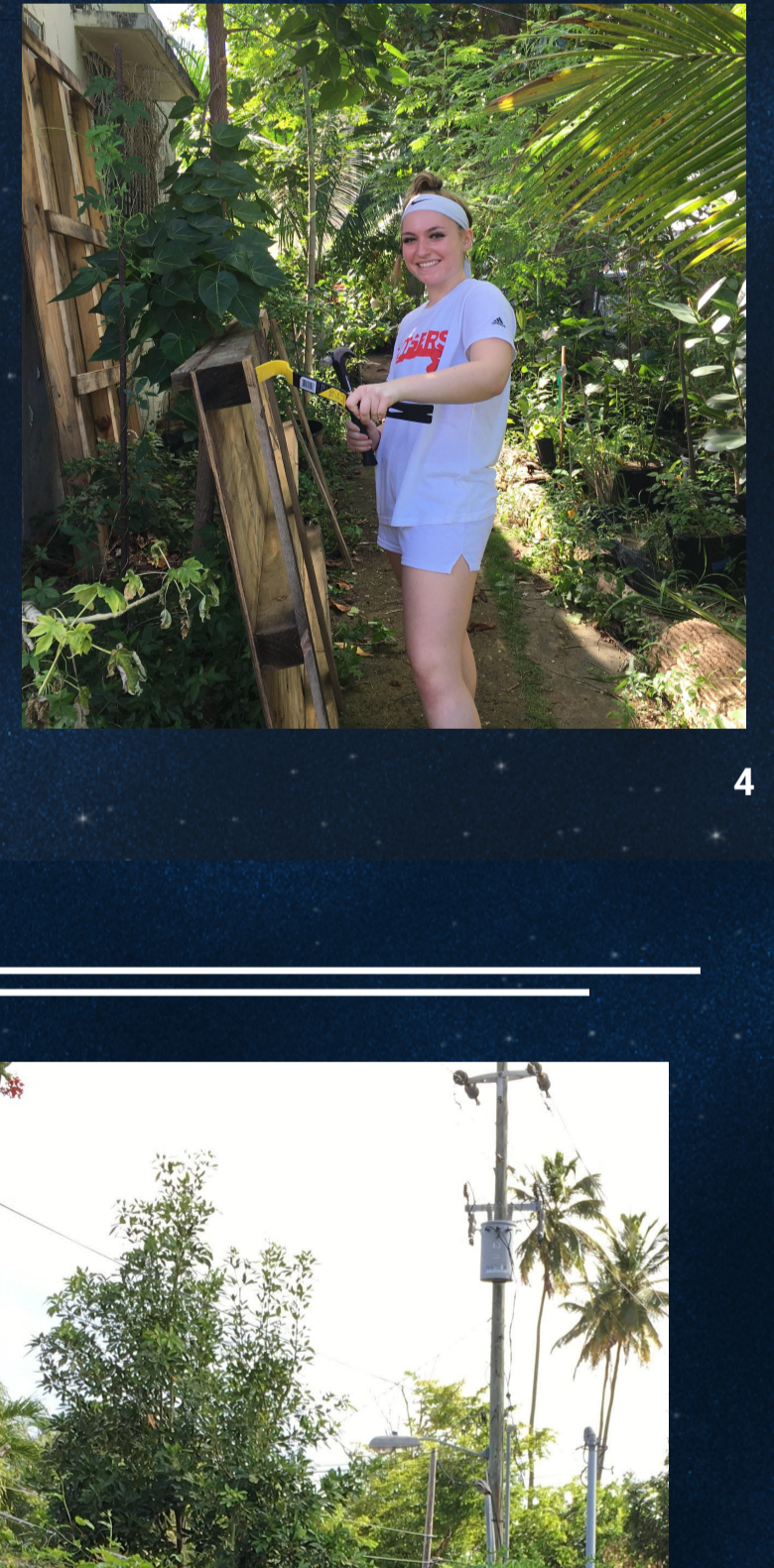
Service Project: Food Accessibility



Banco de Alimentos

"All the group work was excellent, thank you for your time!"

-Melissa, Banco de Alimentos



3

Service Project: Environmental Sustainability



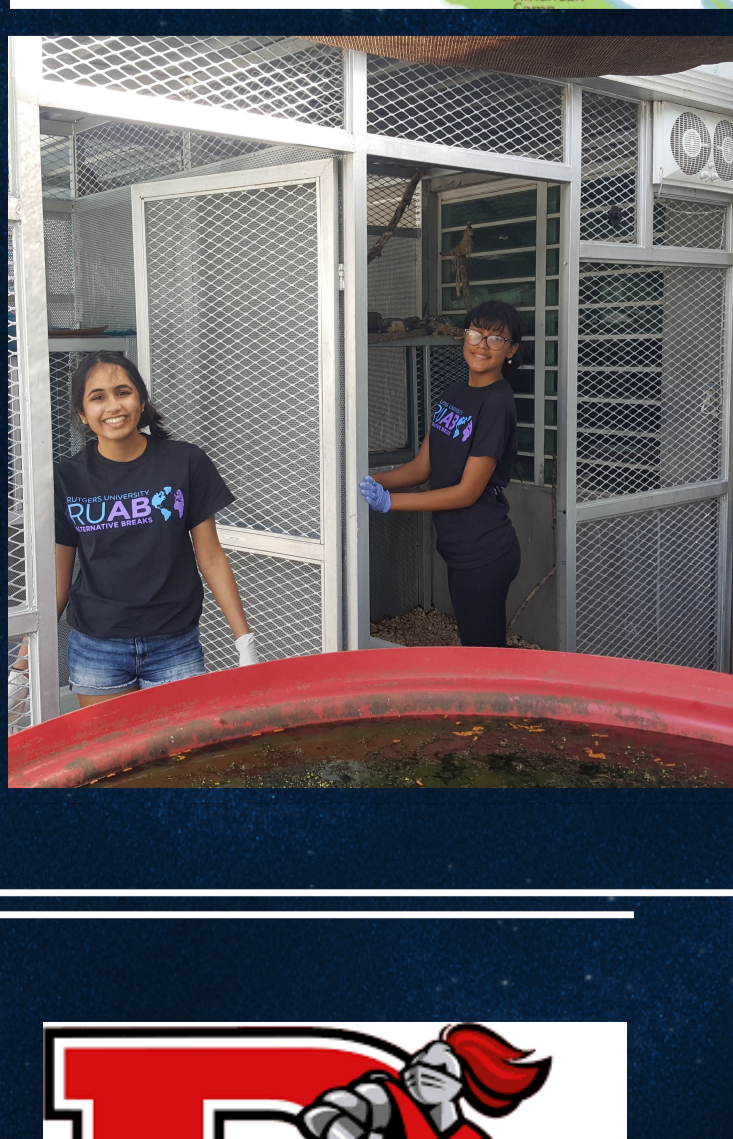
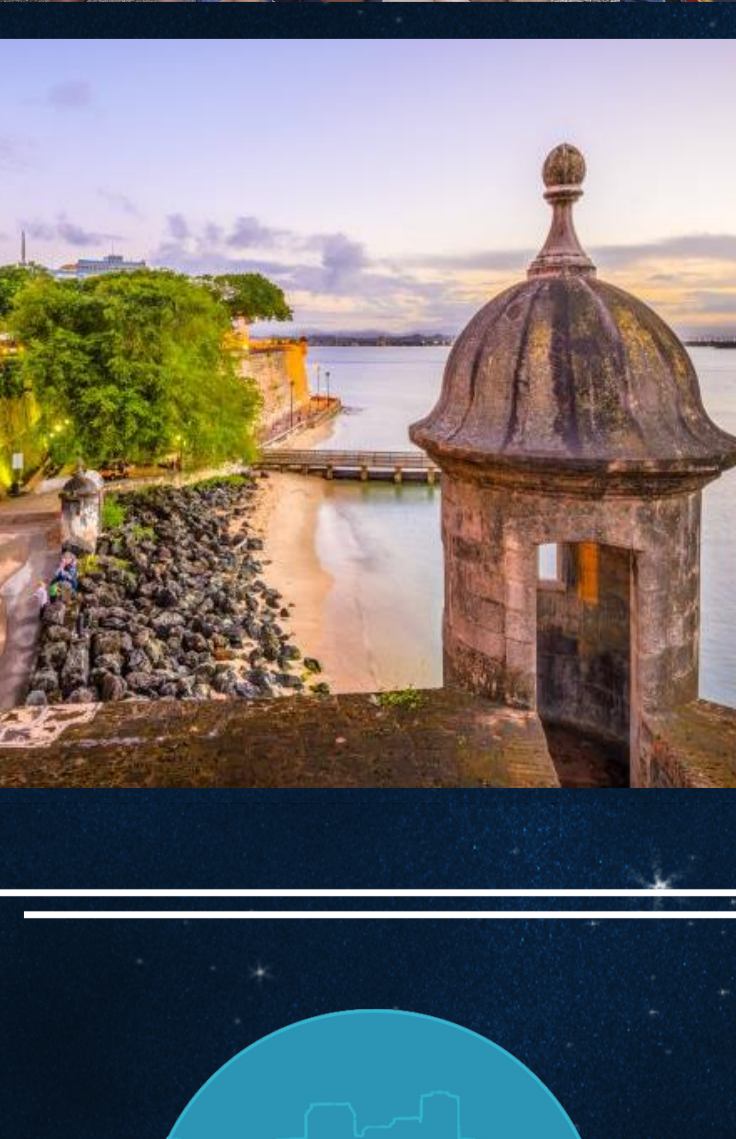
Manatee Conservation Center



CRES Puerto Rico

"Excellent experience! Good exchange of experiences. Thank you to these volunteers!"

-Yvette, CRES



4

Thank you for helping us in our mission of building investment in, commitment to, and capacity of our community partners!

